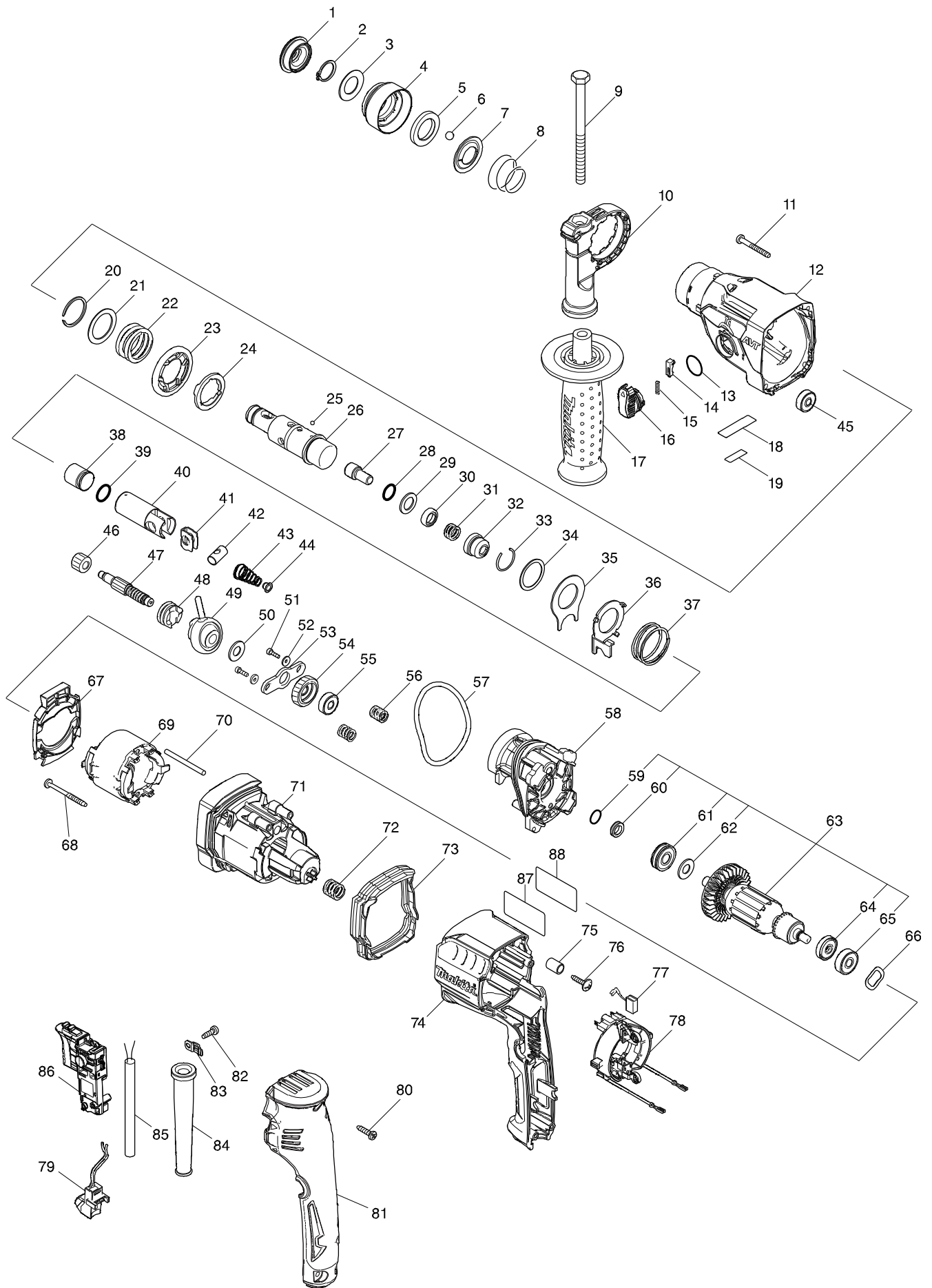


Modelo HR1841F 18MM ROTARY HAMMER



| Artículo | Código | Descripción | Interc | Cantidad | N/O | Opción 1 | Opción 2 | Notas |
|----------|----------|-------------------------------|--------|----------|-----|----------|----------|-------|
| 001 | 286037-3 | CAP 34 | | 1 | | | | |
| 002 | 961057-5 | GRUPILLA S-17* | | 1 | | | | |
| 003 | 253377-4 | FLAT WASHER 17 | | 1 | | | | |
| 004 | 457214-6 | CHUCK COVER | | 1 | | | | |
| 005 | 257416-2 | RING 21 | | 1 | | | | |
| 006 | 216022-2 | BOLA DE ACERO 7.0 | | 2 | | | | |
| 007 | 346177-0 | ARANDELA GUIA HR2300 | | 1 | | | | |
| 008 | 232347-6 | CONICAL COMP. SPRING 21-29 | | 1 | | | | |
| 009 | 921923-8 | TORNILLO HEX. M8X120 | | 1 | | | | |
| 010 | 417911-6 | SOPORTE DE ASA HR1830 | | 1 | | | | |
| 011 | 266053-1 | TORNILLO 4X35 PARA 4322 | | 4 | | | | |
| 012 | 144271-0 | GEAR HOUSING COMPLETE | | 1 | | | | |
| C10 | 213636-8 | RETEN CARCASA HR2610 | | 1 | | | | |
| C20 | 211375-4 | RODAMIENTO BOLAS 6805LLB | | 1 | | | | |
| 013 | 213278-8 | JUNTA 17 HR2020 | | 1 | | | | |
| 014 | 161568-2 | LOCK BUTTON COMPLETE | | 1 | | | | |
| 015 | 232344-2 | COMPRESSION SPRING 3 | | 1 | | | | |
| 016 | 161569-0 | CHANGE LEVER COMPLETE | | 1 | | | | |
| 017 | 158057-6 | EMPUÑADURA PARA HR2220/HR2460 | | 1 | | | | |
| C10 | 931402-8 | TUERCA M8 * PARA HM1800 | | 1 | | | | |
| 018 | 457356-6 | PLATE | | 1 | | | | |
| 019 | 853K20-7 | HR1841F SERIAL NO. LABEL | | 1 | | | | |
| 020 | 961135-1 | ANILLO DE CIERRE HR1830 | | 1 | | | | |
| 021 | 267304-5 | ARANDELA PLANA 25 HR1830 | | 1 | | | | |
| 022 | 232360-4 | COMPRESSION SPRING 25 | | 1 | | | | |
| 023 | 221494-8 | SPUR GEAR 44 | | 1 | | | | |
| 024 | 327039-1 | DRIVING FLANGE | | 1 | | | | |
| 025 | 216019-1 | BOLA DE ACERO PARA 6796FD | | 3 | | | | |
| 026 | 326886-7 | TOOL HOLDER | | 1 | | | | |
| 027 | 326887-5 | IMPACT BOLT | | 1 | | | | |
| 028 | 213117-2 | JUNTA TORICA 11 PARA HR2410 | | 1 | | | | |
| 029 | 253380-5 | FLAT WASHER 13 | | 1 | | | | |
| 030 | 326888-3 | RING 10 | | 1 | | | | |
| 031 | 232357-3 | COMPRESSION SPRING 10A | | 1 | | | | |
| 032 | 327038-3 | CUP SLEEVE | | 1 | | | | |
| 033 | 233942-5 | ANILLO COMPRESION HR1830 | | 1 | | | | |
| 034 | 267175-0 | ARANDELA PLANA 24 PARA 6914DW | | 1 | | | | |
| 035 | 345681-6 | PLACA DE UNION HR1830 | | 1 | | | | |
| 036 | 347128-6 | CHANGE PLATE | | 1 | | | | |
| 037 | 233458-0 | MUELLE 32 HR1830 | | 1 | | | | |
| 038 | 326889-1 | STRIKER | | 1 | | | | |
| 039 | 213832-8 | O-RING 13 | | 1 | | | | |
| 040 | 326890-6 | PISTON CYLINDER | | 1 | | | | |
| 041 | 347127-8 | GUIDE PLATE | | 1 | | | | |
| 042 | 324612-8 | BULON DEL PISTON HR1830 | | 1 | | | | |
| 043 | 232361-2 | CONICAL COMP. SPRING 6-13 | | 1 | | | | |
| 044 | 347130-9 | SPRING GUIDE | | 1 | | | | |
| 045 | 211016-2 | RODAMIENTO 626LLB | | 1 | | | | |

| Artículo | Código | Descripción | Interc | Cantidad | N/O | Opción 1 | Opción 2 | Notas |
|----------|----------|--------------------------------|--------|----------|-----|----------|----------|-------|
| 046 | 221495-6 | SPUR GEAR 12 | | 1 | | | | |
| 047 | 326892-2 | CAM SHAFT | | 1 | | | | |
| 048 | 326891-4 | CLUCTH CAM | | 1 | | | | |
| 049 | 219029-7 | SWASH BEARING 9 | | 1 | | | | |
| 050 | 253733-8 | ARANDELA PLANA 9* | | 1 | | | | |
| 051 | 251510-2 | H. S. HEAD BOLT M3X12 WITH WRM | | 2 | | | | |
| 052 | 253381-3 | FLAT WASHER 3 | | 2 | | | | |
| 053 | 347129-4 | SPRING PLATE | | 1 | | | | |
| 054 | 221496-4 | HELICAL GEAR 23 | | 1 | | | | |
| 055 | 211016-2 | RODAMIENTO 626LLB | | 1 | | | | |
| 056 | 232359-9 | COMPRESSION SPRING 7 | | 2 | | | | |
| 057 | 213833-6 | O-RING 60 | | 1 | | | | |
| 058 | 144270-2 | INNER HOUSING COMPLETE | | 1 | | | | |
| 059 | 213118-0 | JUNTA TORICA 12 HR5211C | | 1 | | | | |
| 060 | 326893-0 | RING 9 | | 1 | | | | |
| 061 | 210162-8 | BALL BEARING 609LLU | | 1 | | | | |
| 062 | 267231-6 | PLANA 9 | | 1 | | | | |
| 063 | 513989-8 | ARMATURE ASS'Y 240V | | 1 | | | | |
| D10 | | INC. 59-62,64,65 | | | | | | |
| 064 | 681670-0 | ARANDELA AISLANTE | | 1 | | | | |
| 065 | 210023-2 | RODAMIENTO DE BOLAS 627DDW | | 1 | | | | |
| 066 | 267804-5 | ARANDELA ONDULADA HR2230 | | 1 | | | | |
| 067 | 457350-8 | BUFFLE PLATE A | | 1 | | | | |
| 068 | 266069-6 | TORNILLO RP 4X45 PARA HR2410* | | 2 | | | | |
| 069 | 633994-0 | FIELD | | 1 | | | | |
| 070 | 256347-2 | ROD 4 | | 3 | | | | |
| 071 | 457352-4 | MOTOR HOUSING A | | 1 | | | | |
| 072 | 232358-1 | COMPRESSION SPRING 10B | | 1 | | | | |
| 073 | 424951-7 | BELLOWS | | 1 | | | | |
| 074 | 457355-8 | HANDLE | | 1 | | | | |
| 075 | 257417-0 | SLEEVE 8 | | 2 | | | | |
| 076 | 251530-6 | TAPPING SCREW 4X18 | | 2 | | | | |
| 077 | 194722-3 | ESCOBILLAS CB-459 GA4530 | | 1 | | | | |
| 078 | 632K41-0 | BRUSH HOLDER UNIT | | 1 | | | | |
| 079 | 631937-6 | CIRCUITO LUZ HR2611FT | | 1 | | | | |
| 080 | 266326-2 | TORNILLO M4X18 | | 3 | | | | |
| 081 | 457354-0 | HANDLE COVER | | 1 | | | | |
| 082 | 266385-6 | TORNILLO M4X14 PARA GA9020S | | 1 | | | | |
| 083 | 687682-1 | STRAIN RELIEF | | 1 | | | | |
| 084 | 682566-8 | SALIDA DE CABLE 10 | | 1 | | | | |
| 085 | 665890-4 | CABLE DE ALIMENTACION KP0810 | | 1 | | | | |
| 086 | 651086-3 | SWITCH | | 1 | | | | |
| 087 | 853K16-8 | HR1841F NAME PLATE | | 1 | | | | |
| 088 | 813E00-9 | CLEAR LABEL | | 1 | | | | |
| A01 | 415486-9 | TOPE PROFUNDIDAD HP1500 | | 1 | | | | |
| A02 | 821549-5 | MALETIN MAKPAC TIPO 1 | | 1 | | | | |
| C10 | 453974-8 | LATCH | | 4 | | | | |
| A03 | 813D83-3 | HR1841FJ PLASTIC CARRYING CASE | | 2 | | | | |

